

NEWSLETTER

JULY 2025 EDITION

Premier RESORT & PARK

 Karsana (Gwarimpa Ext.), Abuja

Strategically located proximate to

Good luck Jonathan housing estate. | Tinudu Renewed Hope housing project. | Papals ground

UNLOCK ABUJA'S HIDDEN GEM

Why Premier Resort is Redefining Land

Investment





5 Reasons Karsana Premier Resort Lands Appreciate Faster

1. LEGAL CLARITY & IRONCLAD TITLES

Unlike open-market lands plagued by ownership disputes, every plot at Karsana Premier Resort comes with government-approved titles and thorough due diligence. Invest with zero legal risks—your ownership is airtight and bankable

2. MASTER-PLANNED INFRASTRUCTURE

Our estate boasts dedicated roads, drainage, electricity, and water systems—all pre-installed! Open-market lands force you to gamble on future development; we deliver it now, accelerating your property's value from day one.

3. PREMIUM AMENITIES & LIFESTYLE

Live within a gated paradise featuring:

- ▶ 24/7 security surveillance
- ▶ Green parks and recreational zones
- ▶ Proximity to schools, malls, and transport hubs

Open-market lands can't match this curated ecosystem that attracts high-end buyers and tenants.

4. CONTROLLED DEVELOPMENT = HIGHER VALUES

Karsana enforces strict architectural standards and zoning laws. No haphazard construction here! This ensures aesthetic harmony and sustained property values—something open areas rarely offer

5. STRATEGIC APPRECIATION HOTSPOT

Nestled in Gwarimpa Extension—Abuja's fastest-growing corridor—Karsana sits where urban expansion meets elite demand. Future road networks and commercial projects will further rocket land values.

Premier
**RESORT
& PARK**

CEO's Message | David O. Onoja

Unlocking Abuja's Hidden Gem

At The Brooks Africa, our vision is to redefine land investment through secure, future-ready developments that blend nature, lifestyle, and value.

Karsana Premier Resort is more than land it's a smart investment backed by government-approved titles, fully installed infrastructure, and a master-planned environment designed for growth. From controlled development standards to its prime location in Gwarinpa Extension, every detail is built to ensure rapid appreciation and sustainable living.

We're not just building estates we're creating communities that inspire purpose, preserve heritage, and unlock economic potential.

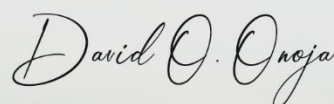
Welcome to a new era of real estate.
Welcome to The Brooks Africa.

Trust is the foundation of every lasting relationship, and it shapes everything we do. Each project we deliver reflects our unwavering commitment to integrity, quality, and excellence.

Whether you're investing, partnering, or owning a part of our vision, your trust guides us brick by brick, we build with it.

Warm regards,


David O. Onoja
CEO, The Brooks Africa





COMING SOON

Introducing **SCARLET**

 Katampe, Abuja, FCT, Nigeria

By The Brooks Africa

Scarlet by The Brooks Africa is a refined expression of modern comfort and smart living, nestled in the serene heart of Katampe, Abuja, Nigeria. This carefully crafted development features a selection of 2-bedroom and 3-bedroom apartments, thoughtfully designed to cater to diverse lifestyle needs.

Each apartment is intelligently laid out to optimize space, with all rooms en-suite and living areas designed to promote both relaxation and functionality. Whether you're a young professional, a growing family, or simply looking for more space to flourish, Scarlet offers the ideal blend of style, convenience, and everyday comfort.

DISCLAIMER: For accurate and up-to-date information regarding fixtures and fittings—such as kitchens, wardrobes, air conditioning units, and other internal features—please consult your assigned Sales Representative. Please note that all computer-generated images, elevations, and material finishes presented are for illustrative purposes only and may differ from actual units. Designs, layouts, and specifications may vary between units and are subject to ongoing updates. All stated measurements are approximate and taken at floor level, and may be affected by construction tolerances. We recommend that you do not purchase carpets, appliances, or other items that rely on precise measurements until you have personally inspected your allocated unit. Kitchen layouts and configurations are representative and may change as the project develops. Always speak with your Sales Representative for the most accurate and specific details relating to your unit. While every effort has been made to ensure the accuracy of the information provided, this document is intended as a general guide only. Prices, specifications, and payment terms are subject to change without prior notice and do not constitute part of any legal contract of sale.

INTRODUCING

SCARLET



KATAMPE, ABUJA

Available in

2 Bedroom

3 Bedroom

4 Bedroom





Introducing



Keera



Dakibiyu, Abuja, FCT, Nigeria

By The Brooks Africa

Keera by The Brooks Africa is a refined showcase of modern comfort and smart living. This thoughtfully designed development offers a mix of 1-bedroom, 2-bedroom, and 4-bedroom apartments tailored to meet a range of lifestyle needs.

Each apartment is efficiently laid out to maximize space and functionality, with all rooms en-suite and living areas designed for comfort and flow. Whether you're starting out, growing a family, or seeking more room to live and thrive, Keera offers the perfect balance of style, convenience, and everyday comfort.



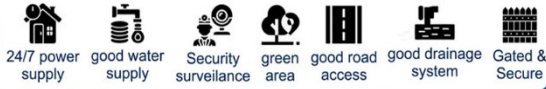
3-Bedroom | 2-Bedroom
1-Bedroom



Car-Parking

DISCLAIMER: For accurate and up-to-date information regarding fixtures and fittings—such as kitchens, wardrobes, air conditioning units, and other internal features—please consult your assigned Sales Representative. Please note that all computer-generated images, elevations, and material finishes presented are for illustrative purposes only and may differ from actual units. Designs, layouts, and specifications may vary between units and are subject to ongoing updates. All stated measurements are approximate and taken at floor level, and may be affected by construction tolerances. We recommend that you do not purchase carpets, appliances, or other items that rely on precise measurements until you have personally inspected your allocated unit. Kitchen layouts and configurations are representative and may change as the project develops. Always speak with your Sales Representative for the most accurate and specific details relating to your unit. While every effort has been made to ensure the accuracy of the information provided, this document is intended as a general guide only. Prices, specifications, and payment terms are subject to change without prior notice and do not constitute part of any legal contract of sale.

Estate Features



UNIT TYPE



4 Bedroom Apartment Terrace Duplex with BQ

₦165,000,000
Premium Plots

Experience elevated living in a spacious 4-bedroom home at Keera Estate, Dakibiyu where modern design meets comfort, in one of Abuja's most desirable locations.



2 Bedroom Apartment

₦85,000,000
Perfect for Professionals and
small families

Enjoy smart, stylish living in a beautifully designed 2-bedroom home at Keera Estate perfect for young families or modern professionals who want to stay ahead of the curve in Abuja.



1 Bedroom Apartment

₦50,000,000
Smart modern living for
singles or investors

Step into comfort and simplicity with a well-designed 1-bedroom home at Keera Estate ideal for singles, young couples, or investors seeking a modern space in a prime Abuja location.

DISCLAIMER: For accurate and up-to-date information regarding fixtures and fittings such as wardrobes, lighting, air conditioning units, and other bedroom or interior features—please consult your assigned Sales Representative. Please note that all computer generated images, elevations, and material finishes are provided for illustrative purposes only and may differ from the actual delivered units. Layouts, designs, and specifications can vary from unit to unit and are subject to periodic updates throughout the development process. All stated measurements are approximate, taken at floor level, and may be influenced by standard construction tolerances. We advise that you refrain from ordering furniture, curtains, or other size-specific items until you have personally inspected your reserved bedroom unit. Bedroom layouts and fittings shown are indicative and may be adjusted as necessary. For the most precise and personalized information regarding your specific unit, always speak with your Sales Representative. While we strive to ensure all information is accurate, this document is intended as a general guide only. Pricing, finishes, and payment terms are subject to change without notice and do not form part of any legal agreement or contract of sale.



FCDA APPROVED



OUR LAND
PROPERTY ARE
STRATEGICALLY
LOCATED AT

KARSANA
(GWARIMPA EXT.)
ABUJA



Premier Resort & Park

Block of Flat | 4-Bedroom Semi detached Duplex | 3-Bedroom Terrace

Premier Resort Park is a premium estate located in Karsana, FCT Abuja, offering serviced plots of 900sqm, 600sqm, 350sqm, 250sqm, and 150sqm. Nestled in a serene and fast-developing area, it's ideal for individuals and investors seeking comfort, class, and long-term value.

DISCLAIMER: For accurate and up-to-date information regarding fixtures and fittings such as wardrobes, lighting, air conditioning units, and other bedroom or interior features—please consult your assigned Sales Representative. Please note that all computer generated images, elevations, and material finishes are provided for illustrative purposes only and may differ from the actual delivered units. Layouts, designs, and specifications can vary from unit to unit and are subject to periodic updates throughout the development process. All stated measurements are approximate, taken at floor level, and may be influenced by standard construction tolerances. We advise that you refrain from ordering furniture, curtains, or other size-specific items until you have personally inspected your reserved bedroom unit. Bedroom layouts and fittings shown are indicative and may be adjusted as necessary. For the most precise and personalized information regarding your specific unit, always speak with your Sales Representative. While we strive to ensure all information is accurate, this document is intended as a general guide only. Pricing, finishes, and payment terms are subject to change without notice and do not form part of any legal agreement or contract of sale.

► LAND TYPE



900 SQM
Block of flats

₦80,600,000
Premium Plots

Own a premium 900sqm plot in the heart of Karsana spacious, titled, and perfect for your dream home or investment



400 SQM
4 bedroom
fully detached duplex

₦35,230,000
Premium Plots

Secure a 400sqm plot in prime Karsana the perfect size for a stylish home in a fast-growing neighborhood.



350 SQM
4 bedroom
fully detached duplex

₦29,325,000
Premium Plots

Own a 350sqm plot at Premier Resort Park, Karsana a well-sized option for a modern family home, offering comfort, convenience, and great value in a prime Abuja location.



250 SQM
4 bedroom
semi detached duplex

₦24,250,000
Premium Plots

Perfect for first-time homeowners or investors, the 250sqm plot at Premier Resort Park offers a compact yet functional space in a serene and strategic Karsana location.



150 SQM
3 Bedroom
Terrace

₦13,850,000
Premium Plots

A smart start in real estate the 150sqm plot at Karsana is ideal for minimalists or young families looking to build in a secure, fast-developing estate



Premier Resort
& Park



FCDA APPROVED

DISCLAIMER: For accurate and up-to-date information regarding fixtures and fittings such as wardrobes, lighting, air conditioning units, and other bedroom or interior features—please consult your assigned Sales Representative. Please note that all computer generated images, elevations, and material finishes are provided for illustrative purposes only and may differ from the actual delivered units. Layouts, designs, and specifications can vary from unit to unit and are subject to periodic updates throughout the development process. All stated measurements are approximate, taken at floor level, and may be influenced by standard construction tolerances. We advise that you refrain from ordering furniture, curtains, or other size-specific items until you have personally inspected your reserved bedroom unit. Bedroom layouts and fittings shown are indicative and may be adjusted as necessary. For the most precise and personalized information regarding your specific unit, always speak with your Sales Representative. While we strive to ensure all information is accurate, this document is intended as a general guide only. Pricing, finishes, and payment terms are subject to change without notice and do not form part of any legal agreement or contract of sale.

Our Homes



At The Brooks Africa, our homes are thoughtfully crafted to blend aesthetics with functionality—reflecting our commitment to redefining real estate through timeless design and sustainable innovation. Each space is built to stand out today and remain relevant for the future.



The Hive
WUYE, ABUJA

5-Bedroom Fully Finished Duplex with elevator
2-Bedroom Condo



The Cube
GUZAPE, ABUJA

4-Bedroom | 2-Bedroom | 1 Bedroom

DISCLAIMER: For accurate and up-to-date information regarding fixtures and fittings such as wardrobes, lighting, air conditioning units, and other bedroom or interior features—please consult your assigned Sales Representative. Please note that all computer generated images, elevations, and material finishes are provided for illustrative purposes only and may differ from the actual delivered units. Layouts, designs, and specifications can vary from unit to unit and are subject to periodic updates throughout the development process. All stated measurements are approximate, taken at floor level, and may be influenced by standard construction tolerances. We advise that you refrain from ordering furniture, curtains, or other size-specific items until you have personally inspected your reserved bedroom unit. Bedroom layouts and fittings shown are indicative and may be adjusted as necessary. For the most precise and personalized information regarding your specific unit, always speak with your Sales Representative. While we strive to ensure all information is accurate, this document is intended as a general guide only. Pricing, finishes, and payment terms are subject to change without notice and do not form part of any legal agreement or contract of sale.



ONGOING
PROJECT



FCDA APPROVED



House Types	Features	Price Tag	Available Unit
COXA 2 Bedroom Condominium Finished	2 Ample Parking Spaces 1 Living Room	120M	
2 Bedroom Condominium Fully Furnished	2 Ample Parking Spaces 1 Living Room Electrical Fitting POP In-ceiling Speakers CCTV with home Automation Fitted Fitchen AC	160M	
GLOSSA 5 Bedroom Semi Detached Villa + Boy's Quarters	IMAX Cinema 2 Family Lounges Gym, Swimming Pool Elevator (Optional) A study, Kitchenette A Roof Gargen Dedicated Green Area 4 Ample Parking Spaces Fully Fitted Kitchen Wardrobe	550M	

ONGOING PROJECT

THE HIVE

 Wuye, Abuja, Nigeria

Octagonally shaped 5 bedroom family duplex
unit ensuite



Gym



Luxurious
walk-in closet



CCTV



Green Area



Amazing
light ambience

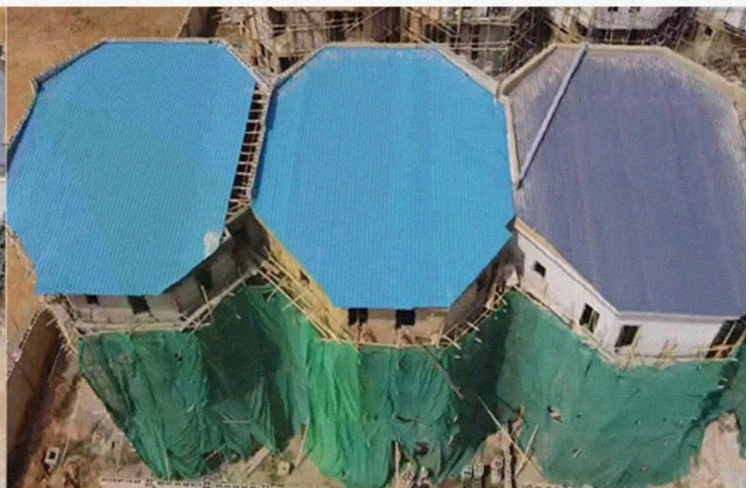
IMAX Cinema | Interactive lobby | Fully fitted kitchen | Home office | CCTV with home Automation
Scenic View | A fully ensuite BQ | Fully fitted kitchen | Concealed toilet wares | In-ceiling speakers



THE HIVE

Octagonally shaped 2-bedroom family duplex,
all rooms en-suite.

📍 Wuye, Abuja, Nigeria





ONGOING PROJECT



House Types

Features

Price Tag

Available Unit

Edge
1 Bedroom

- > 1 Ample parking spaces
- > 1 Living room

65M

1 Unit Left

2 Bedroom

- > All Room En-suite
- > Living Room
- > Kitchenette

SOLD OUT!

Sparkles
3 Bedroom

- > All Room En-suite
- > Living Room
- > Dining
- > Kitchen

SOLD OUT!

Vertex
4 Bedroom
+ Boy's Quarters

- > Central Security surveillance system
- > Fiber optic
- > Burglar alarm
- > Automated exterior gate
- > water treatment plant
- > Dedicated bore hole & pressure pump
- > Smart electrical components
- > utility and facility management
- > 24/7 power supply

300M

1 Unit Left

ONGOING PROJECT

THE CUBE



Guzape, Abuja, Nigeria

Iconic and uniquely fashioned, bedroom terraces



Gym



Luxurious
walk-in closet



CCTV



Green Area



Amazing
light ambience

IMAX Cinema | Interactive lobby | Fully fitted kitchen | Home office | CCTV with home Automation
Scenic View | A fully ensuite BQ | Fully fitted kitchen | Concealed toilet wares | In-ceiling speakers



COMPLETED PROJECTS

VT Kubwa Abuja 5 Bedroom Duplex



Knight Suites and Apartment Kuje Abuja



500 meters U-shaped retaining wall water channel Lugbe, Abuja



COMPLETED PROJECTS

Knight House Kano

7 bedroom detached villa



Estate Gate House Lugbe Abuja



COMPLETED PROJECTS

BROOKSVILLE APARTMENT Jahi

1 bedroom Condo, 2 and 3 bedroom apartment



Sub basement
parking



Relaxing
living room
space



Family lounge



Gym



Luxurious
walk-in closet



CCTV



Green Area



Amazing
light ambience



COMPLETED PROJECTS

THE BLACK ONYX Jahi

5 & 4 bedroom luxurious units fully ensuite



Sub basement
parking



Relaxing
living room
space



Family lounge



Gym



Luxurious
walk-in closet



CCTV



Green Area



Beautiful
indoor lighting



Sustainable & Eco-Friendly Construction

The Bar lance 📍 Maitama



📍 Wuse Zone 6



📍 Guzape COZA, Abuja



Payment Plan Breakdown

Flexibility in payments is crucial when it comes to homeownership. For clients' payment convenience, we give a minimum of 12 months across all our housing categories.

Pay with ease using our payment plan

OUTRIGHT PAYMENT (FULL PAYMENT DISCOUNT)

Outright payment attracts a negotiable discount.

3-MONTH PAYMENT PLAN

40% initial deposit. Remaining 60% spread evenly over 3 months (20% per month).

6-MONTH PAYMENT PLAN

40% initial deposit. Remaining 60% spread evenly over 6 months. **Note** An additional 8% surcharge is applied to the remaining balance.

12-MONTH PAYMENT PLAN

40% initial deposit. Remaining 60% spread evenly over 12 months. **Note** An additional 15% surcharge is applied to the remaining balance.

FOLLOW US!

    thebrooksafrica  the_brooksafrica

